



# Miro Sconce

The Miro Sconce is defined by two curved forms. The light illuminates from the internal space between the nesting forms, projecting a beautiful diffused light out into the interior space.

## Dimensions

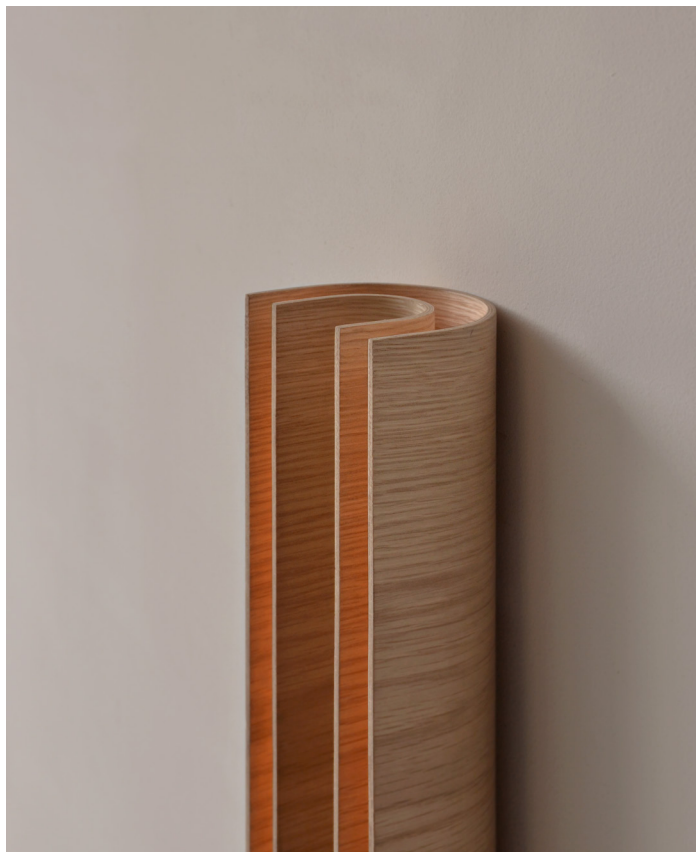
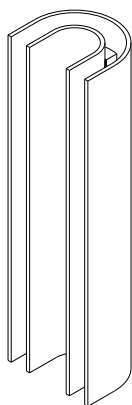
Standard sizes available:

180mm H x 100mm W

280mm H x 100mm W

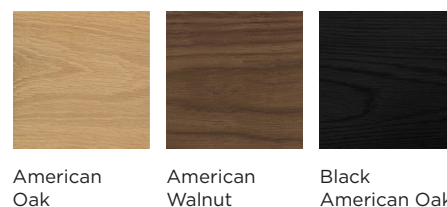
380mm H x 100mm W

Dimensions customisable upon request

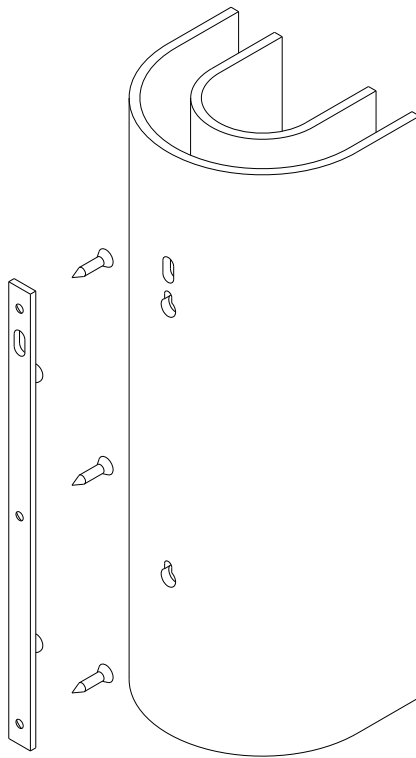


Mounting	Wall Mount
Environment	Indoor Use
Weight	0.5kg
Light Source	Warm White LED (3000k), other options also available
Voltage	24V
Power	8W
Led Driver	Supplied (100 / 240V to 24V)
LED Lumens	1600LM/M
Dimmable	Yes

## Materials



Other timber options available upon request



### Installation

Installation must be performed by a certified electrician.

1. Please ensure mains power is switched off before installation
2. The LED driver is to be installed in the wall cavity prior to installation.
3. The mounting bracket is to be secured to wall using 3 screws. Please ensure bracket is mounted vertically. When positioning the bracket, please account for the 6mm drop as the lights will slot down into position.
4. Connect the wires to the 24V Led Driver
5. Position the two keyhole slots onto the bolt heads and slide the light down firmly into position.

